

## FEATURES & SPECIFICATIONS

**INTENDED USE** — Our recessed LED module is the most economical means to create a well lit environment with exceptional energy efficiency and near zero maintenance. Great for retrofit into existing downlight cans or new construction and remodel applications. Compliant friction clip retention allows fitment into nearly 100% of installed cans. The LED module maintains at least 70% light output for 50,000 hours.

**CONSTRUCTION** — Aluminum spun reflector with deep baffle configuration for reduced glare. Combined LED and driver printed circuit board attached. Inner reflector cone funnels light through the pressed-in diffused lens.

Baffle and open trim inserts are available in multiple finishes.

**OPTICS** — Diffused lens at end of mixing chamber to provide even light distribution for general illumination, equivalent to 65W BR30 Lamp.

Wide flood beam angle at > 45°.

**ELECTRICAL** — Center 2 Edge™ (patent pending) technology created for a single point source. Primary power disconnect provided for simple connection to a dedicated LED connector in the housing.

Dimming down to 10%. For compatible dimmers, refer to [Compatible Dimmers Chart](#).

P Series' patent pending driver has zero inrush which allows power loads to be calculated with actual rated wattages.

Example: 53 units of 4BPMW LED fixtures can be installed in line with a 600-watt dimmer. 600W/11.2W = 53.5 fixtures.

Standard input wattage is 11.2 watts or less; equivalent to 65-watt incandescent.

**INSTALLATION** — Suitable for installation in standard height rough-in sections.

E26 socket adaptor (except in the state of California on 4BP fixtures) and splice kit ships standard. This enables easy installation or permanent conversion to an LED source for Title 24 compliance.

Friction clips allow fitment into cans with an inside diameter of 4.0" to 4.5".

**LISTINGS** — CSA certified to US and Canadian safety standards. California T24 compliant. Wet location listed for indoor use only. WSEC ASTM E283 for Air-Tight (with IC housings).

**WARRANTY** — 5-year limited warranty. Complete warranty terms located at [www.acuitybrands.com/CustomerResources/Terms\\_and\\_conditions.aspx](http://www.acuitybrands.com/CustomerResources/Terms_and_conditions.aspx)

**Note:** Actual performance may differ as a result of end-user environment and application.

All values are design or typical values, measured under laboratory conditions at 25 °C.

Specifications subject to change without notice.

**PATENTS PENDING.**

Catalog Number
Notes
Type



E26 adaptor



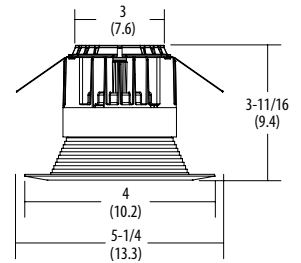
Splice kit (included)

### LED Recessed Downlighting

# 4BP/40P

4" LED Module

IC/Non-IC  
Retrofit



#### Specifications

Aperture: 4.0 (10.2)

Ceiling opening: Determined by rough-in

Overlap trim: 5-1/4 (13.3)

Height: 3-11/16 (9.4)

All dimensions are inches (centimeters) unless otherwise indicated.

### ORDERING INFORMATION

Lead times will vary depending on options selected. Consult with your sales representative.

**Example: 4BP TRMW LED 27K 90CRI**

Series/Finish	Lamp	CCT / CRI / W / Lumens <sup>1</sup>	Voltage	Options
4BPMW 4" Baffle LED module, matte white	LED	(blank) 3000 K / 83CRI / 10.6W / 620L	(blank) 120V	L3LED T24 New construction rough-in LED base
4BP TRMW 4" Baffle LED module, black baffle, matte white flange		27K 90CRI 2700 K / 93CRI / 11.2W / 600L		L3RLED T24 Remodel rough-in LED base
4BPBN 4" Baffle LED module, brushed nickel		30K 90CRI 3000 K / 93CRI / 11.2W / 600L		L3 New construction rough-in <sup>2</sup>
4BPORB 4" Baffle LED module, oil-rubbed bronze		40K 90CRI 4000K/95CRI/11.2W/650L		L3R Remodel rough-in <sup>2</sup>
				L/SKTWHIP No E26 Adapter (CA only) <sup>3</sup>
4OPA 4" Open LED module, clear diffuse	LED	(blank) 3000 K / 83CRI / 10.6W / 620L	(blank) 120V	L3LED T24 New construction rough-in LED base
4OPAZ 4" Open LED module, clear specular		27K 90CRI 2700 K / 93CRI / 11.2W / 600L		L3RLED T24 Remodel rough-in LED base
4OPA TRMW 4" Open LED module, clear diffuse, matte white flange		30K 90CRI 3000 K / 93CRI / 11.2W / 600L		L3 New construction rough-in <sup>2</sup>
4OPAZ TRMW 4" Open LED module, clear specular, matte white flange		40K 90CRI 4000K/95CRI/11.2W/650L		L3R Remodel rough-in <sup>2</sup>

### TRIM INSERTS (for field configuration; ordered separately)

**Example: 4BPBN R12**

Series/Finish	Packaging
4BP TRMW 4" Baffle black, matte white flange insert	R12 Retail pack of 12 units U Unit
4BPBN 4" Baffle brush nickel insert	
4BPORB 4" Baffle oil-rubbed bronze insert	
4OPA 4" Open clear diffuse insert	
4OPAZ 4" Open clear specular insert	
4OPA TRMW 4" Open clear diffuse, matte white flange insert	
4OPAZ TRMW 4" Open clear specular, matte white flange insert	

#### Notes

- Total system delivered lumens.
- Must be ordered on a separate line.
- This option must be selected for product shipping to California.

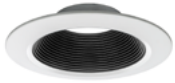
**Accessories:** Order as separate catalog number.

RK1 CG52178 E26 ADAPTER/MALE PLUG BAL DISC ASM E26 Adapter

**See trim inserts on page 2.**

# 4" LED Module

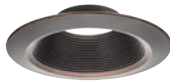
## TRIM INSERTS



Black Baffle with Matte White Trim Ring (TRMW)



Brushed Nickel Baffle (BN)



Oil-rubbed Bronze Baffle (ORB)



Clear Diffuse with Matte White Trim Ring (A TRMW)



Clear Diffuse (A)



Clear Specular with Matte White Trim Ring (AZ TRMW)



Clear Specular (AZ)

## PHOTOMETRICS

### Distribution Curve

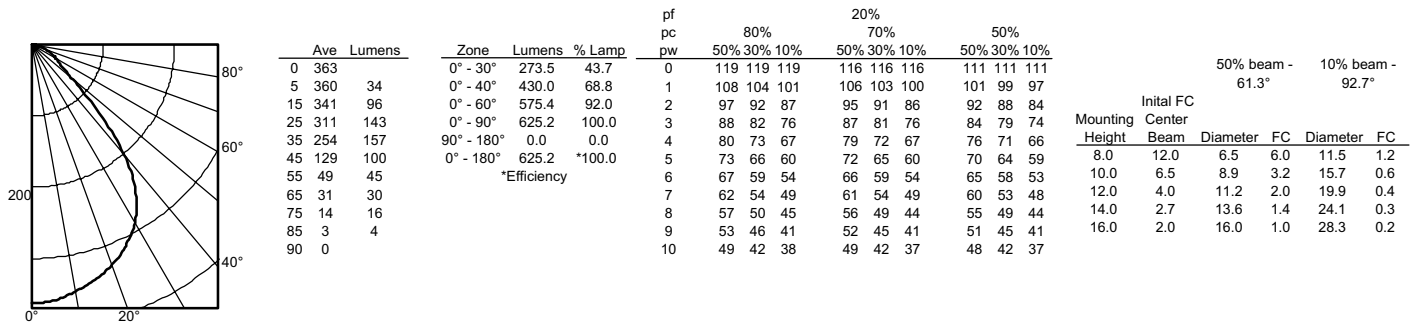
### Distribution Data

### Output Data

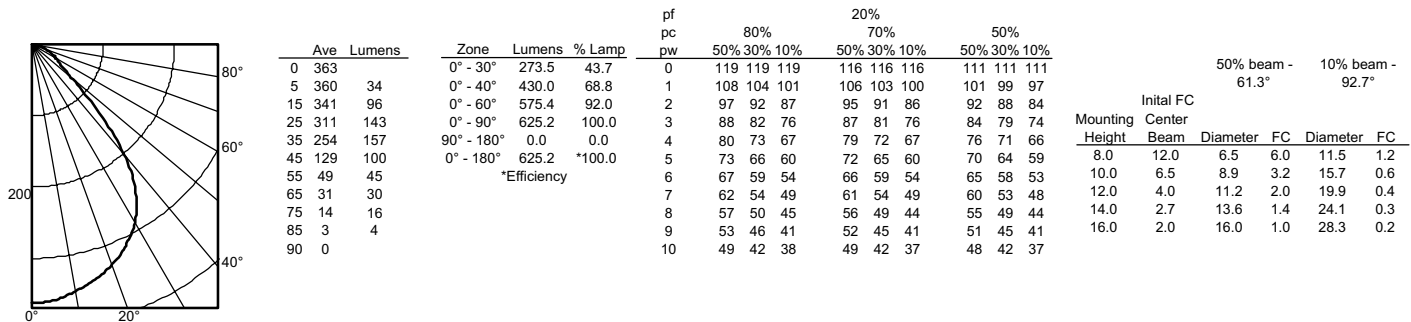
### Coefficient of Utilization

### Illuminance Data at 30" Above Floor for a Single Luminaire

4BPMW LED 80CRI, 3000 K LEDs, input watts: 11.16, delivered lumens: 625, LM/W= 56, test no. LTL 23665, tested in accordance with IESNA LM 79-08



4BPMW LED 90CRI, 3000 K LEDs, input watts: 11.16, delivered lumens: 625, LM/W= 56, test no. LTL 23665P, tested in accordance with IESNA LM 79-08



# 4" LED Module

## LIGHTING FACTS

Lithonia Lighting

**LED lighting facts**  
A Program of the U.S. DOE

Light Output (Lumens)	600
Watts	11.3
Lumens per Watt (Efficacy)	53

Color Accuracy Color Rendering Index (CRI)	92
---	----

Light Color  
Correlated Color Temperature (CCT) **2700 (Warm White)**

2700K 3000K 4500K 6500K

All results are according to IESNA LM-79-2008: Approved Method for the Electrical and Photometric Testing of Solid-State Lighting. The U.S. Department of Energy (DOE) verifies product test data and results.

Visit [www.lightingfacts.com](http://www.lightingfacts.com) for the Label Reference Guide.

Registration Number: JB22-4AASR (2/27/2014)  
Model Number: 4BPMW LED 27K 90CRI  
Type: Retrofit Kit - Downlight

Lithonia Lighting

**LED lighting facts**  
A Program of the U.S. DOE

Light Output (Lumens)	600
Watts	11.3
Lumens per Watt (Efficacy)	53

Color Accuracy Color Rendering Index (CRI)	93
---	----

Light Color  
Correlated Color Temperature (CCT) **3000 (Bright White)**

2700K 3000K 4500K 6500K

All results are according to IESNA LM-79-2008: Approved Method for the Electrical and Photometric Testing of Solid-State Lighting. The U.S. Department of Energy (DOE) verifies product test data and results.

Visit [www.lightingfacts.com](http://www.lightingfacts.com) for the Label Reference Guide.

Registration Number: JB23-4BFFK1 (2/27/2014)  
Model Number: 4BPMW LED 30K 90CRI  
Type: Retrofit Kit - Downlight

LITHONIA LIGHTING

**LED lighting facts**  
A Program of the U.S. DOE

Light Output (Lumens)	650
Watts	11.2
Lumens per Watt (Efficacy)	58

Color Accuracy Color Rendering Index (CRI)	95
---	----

Light Color  
Correlated Color Temperature (CCT) **4000 (Bright White)**

2700K 3000K 4500K 6500K

All results are according to IESNA LM-79-2008: Approved Method for the Electrical and Photometric Testing of Solid-State Lighting. The U.S. Department of Energy (DOE) verifies product test data and results.

Visit [www.lightingfacts.com](http://www.lightingfacts.com) for the Label Reference Guide.

Registration Number: NJSM-FNPGT3 (8/6/2014)  
Model Number: 4BPMW LED 40K 90CRI  
Type: Luminaire - Downlight

Lithonia Lighting

**LED lighting facts**  
A Program of the U.S. DOE

Light Output (Lumens)	620
Watts	10.6
Lumens per Watt (Efficacy)	58

Color Accuracy Color Rendering Index (CRI)	86
---	----

Light Color  
Correlated Color Temperature (CCT) **3000 (Bright White)**

2700K 3000K 4500K 6500K

Warranty\*\* **Yes**

All results, except LED Lumen Maintenance, are according to IESNA LM-79-2008: Approved Method for the Electrical and Photometric Testing of Solid-State Lighting. The U.S. Department of Energy (DOE) verifies product test data and results.

\*\* See [www.lightingfacts.com/products](http://www.lightingfacts.com/products) for details.

Registration Number: JB22-KNBSBG (8/6/2013)  
Model Number: 4BP (Revised 07-25-13)  
Type: Recessed downlight

## ADDITIONAL DATA

ENERGY DATA* - 600 Lumens		
	CRI - 83	CRI - 93
Lumens	620	600
Min. starting temp	-18°C (0°F)	-18°C (0°F)
Max. temp	46°C (115°F)	46°C (115°F)
EMI/RFI	FCC Title 47 CFR, Part 15, Class B	FCC Title 47 CFR, Part 15, Class B
Sound rating	A standards	A standards
Input voltage	120V	120V
Min. power factor	0.97	0.97
Input frequency	50/60 Hz	50/60 Hz
Rated wattage	10.6W	11.2W
Input power	10.6W	11.2W
Input current	.11A	.09A

\*Values at non-dimming line voltage.

Trim finish	Lumen multiplier
Matte White	1.00 (Baseline)
Clear Diffuse	0.99
Clear Specular	0.99
Brushed Nickel	0.83
Black Baffle	0.76
Oil Rubbed Bronze	0.78

Color temperature	Lumen multiplier
2700K	0.97
3000K	1.00 (Baseline)
4000K	1.08



4BP-40P LED